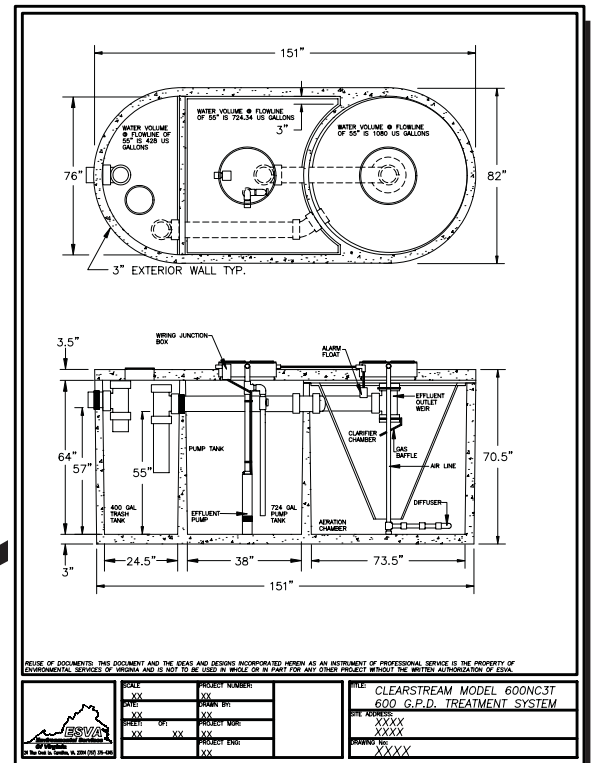
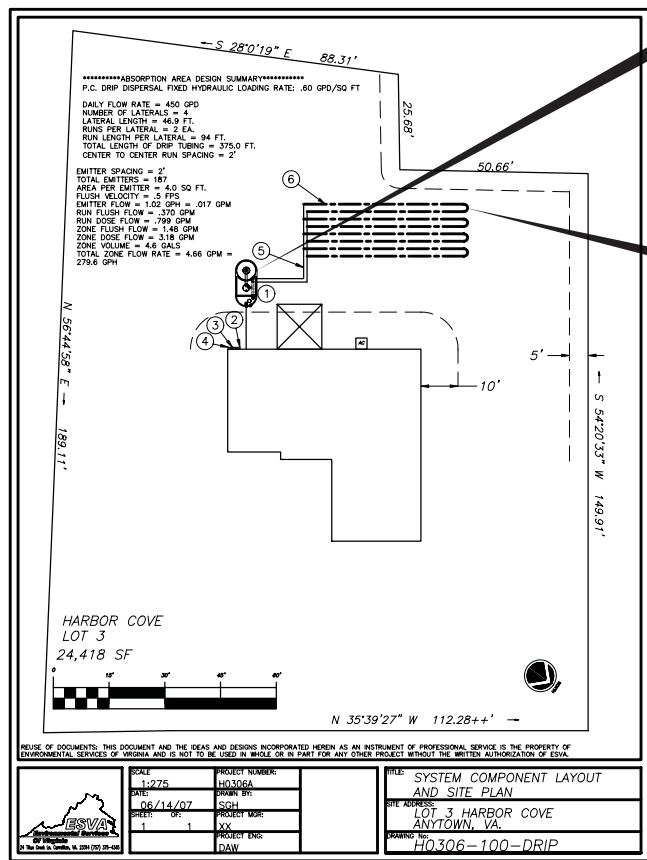
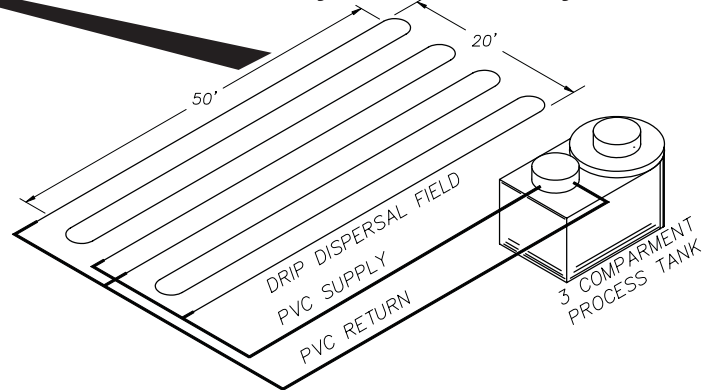


# Paying too much for septic design?

Is the high cost of on-site wastewater systems eating into your building budget? We are **Environmental Services of Virginia** and we can help. With advanced technology and software we can quickly evaluate site and soil conditions in order to design a wastewater system to meet your needs and budget. Our in-house software automatically sizes drainfields, calculates pump sizes, and provides material take-offs. Laser based measurement tools enable us to find exact locations and elevations in order to assure equipment will fit and function properly. Most systems can be designed using standard components thereby saving thousands over proprietary packaged systems. Call us today to see how we can provide lower cost septic designs. Serving builders and homeowners in Isle of Wight, Suffolk, Southampton and Surry counties.



**BAYSAVER DRIP™**  
Earth friendly wastewater systems



ESVA Onsite Wastewater Tools © 2008 Drip Dispersal

**DRIP-O-MATIC**

Absorption Area Parameters		Drip Loading Rates	
No. Bedrooms	3	Emitter Spacing (in.)	24
Design Flow Rate (GPD)	450	Emitter Flow (Gph)	1.02
Loading Rate Gpd/SqFt	0.60	Run Spacing (in.)	24
Runs per Lateral	1	BOD5 + TSS (ppm)	30
No. Laterals	4	Total Dripline length = 375.0 ft.	
Lateral Length (ft.)	93.8	Length per Run = 94 ft.	
Percent Slope %	0	No. of Emitters = 187 ea.	
Depth (in.)	6	Area per Emitter = 4.0 Sq Ft.	
Flush Velocity (fps)	0.5	Total Flow = 4.66 GPM.	
		Total Area = 750.0 Sq. Ft.	
		Friction Loss = 3.33 Ft.	

OK Cancel

Drip dispersal can be installed on sites with water tables as shallow as 6 inches.  
Come see us at [www.esva-onsite.com](http://www.esva-onsite.com) and see what we can do for you.



Custom in-house software  
automates the design process.

24 Titus Creek Ln. Carrollton, VA. 23314 (757) 375-4345 Fax (757) 238-5586

• Septic System Design, Site and soil surveys • Aerobic treatment units • Alternative systems •